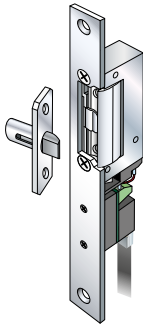


# SLIM-DOORSTRIKE

## PROFESSIONAL TECNODIMENSIONE ELECTRICAL DOOR STRIKE



**FOR FLUSH MOUNTING**

Anti-panic "fail-safe" model (designed to disengage in the event of power failure) with RR sensor to control the door status and front plate for recess-mounting. Available on request with a mini spring bolt and adjustable self-lubricating bolt.

One unit...  
for **3** different needs.

**1<sup>st</sup>** Immediate installation ZEROTIME = **Click&Go**

**2<sup>nd</sup>** Ultra-slim and compact design to suit all door frame sections = **SLIM**

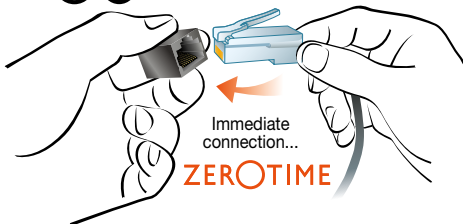
**3<sup>rd</sup>** Sensor controlling the door status and adjustable counter latch = **REGOSTRIKE**

**4<sup>th</sup>** fail-safe; it automatically unlocks in the event of power failure freeing the door for emergency exit also in the event of fire = **FAIL-SAFE**

PERFECT FOR STERILE ROOMS.



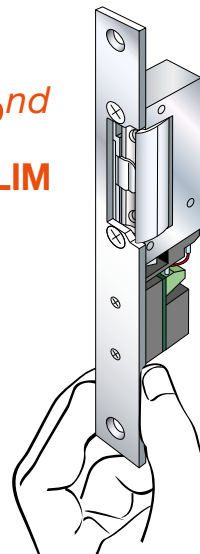
**1<sup>st</sup> Click&Go**



Insert the plug connector... snap it in place... that's all you need for a perfectly working system...

**Click&Go!**

**2<sup>nd</sup> SLIM**



**SLIM-MICROREDLOCK**

Ultra-slim and compact for very small door frame profiles...

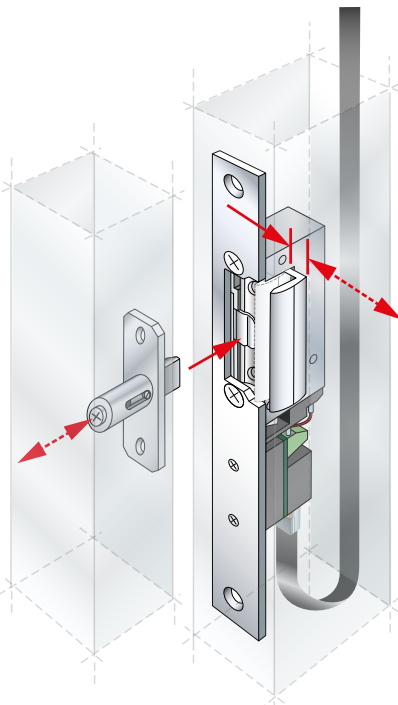
... it's **SLIM!**

**3<sup>rd</sup> REGOSTRIKE**

**SLIM-DOORSTRIKE**

Supplied with a sensor that controls the door status (open/closed) and the penetration of the spring bolt (also adjustable) during closing, and with a counter latch that can be adjusted to obtain a perfect compensation and alignment of the wing...

... it's **REGOSTRIKE!**



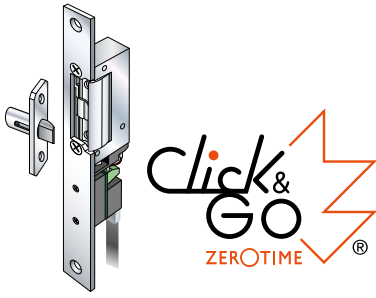
**4<sup>th</sup> FAIL-SAFE**



**SLIM-DOORSTRIKE**

Automatic fail-safe unlock = bolt "in" without power, bolt "out" when powered. In the event of fire or power failure it automatically unlocks freeing the exit...

... it's **FAIL-SAFE!**



**PROFESSIONAL ELECTRICAL DOOR STRIKE**

**SLIM-DOORSTRIKE**

With quick fitting 8 pole RJ45 plug to simplify installation and wiring

**Export Product-list**

January 2018



**TECNODIMENSIONE®**

Electrical door strike for recess-mounting.  
Ideal for "clean rooms".

ordering information

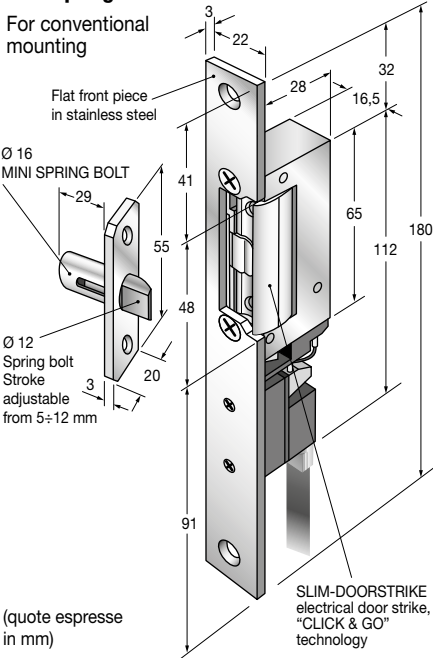
Q.ty

MODELS

N°

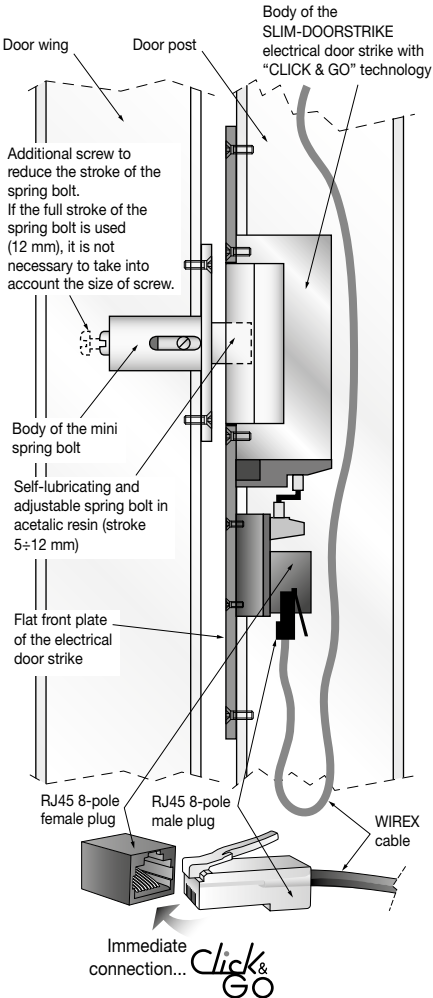
**SLIM-DOORSTRIKE "CLICK & GO" with mini spring bolt**

For conventional mounting



(quote espressa in mm)

**EXAMPLE OF RECESS-MOUNTING ON THE DOOR FRAME**



Series **SLIM-DOORSTRIKE (fail-safe) "anti-panic"** model = Disengages in the event of power failure.  
If a fire breaks out and no power is available, the electrical **SLIM-DOORSTRIKE** automatically disengages to allow a safe evacuation.

**Models for 12 Vdc power supply**

SLIM-DOORSTRIKE electrical door strike for flush mounting, "CLICK & GO" technology, with one 8-pole RJ45-8 quick fitting female connector for immediate connections.  
- Fail-safe (anti-panic) version with 100% ED coil for a continuous operation  
- RR microswitch sensor controlling the door status  
- Adjustable counter latch  
- 12 Vdc/280 mA power supply  
Supplied with flat front plate in stainless steel.

0158J12RW

**Models for 24Vdc power supply**

SLIM-DOORSTRIKE electrical door strike for flush mounting, "CLICK & GO" technology, same characteristics as the model above but for a 24Vdc/140 mA power supply.

0158J14RW

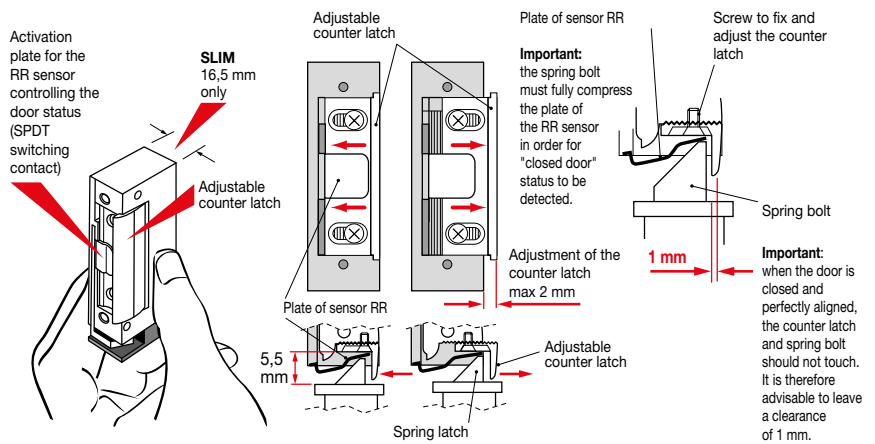
**Accessory (optional)**

**Mini spring bolt for recess-mounting with adjustable spring bolt.** Body with recess-mounting flange in anodised machined aluminium with a "silver" finish. Self-lubricating spring bolt in acetalic resin with stroke adjustable from 5 to 12 mm.

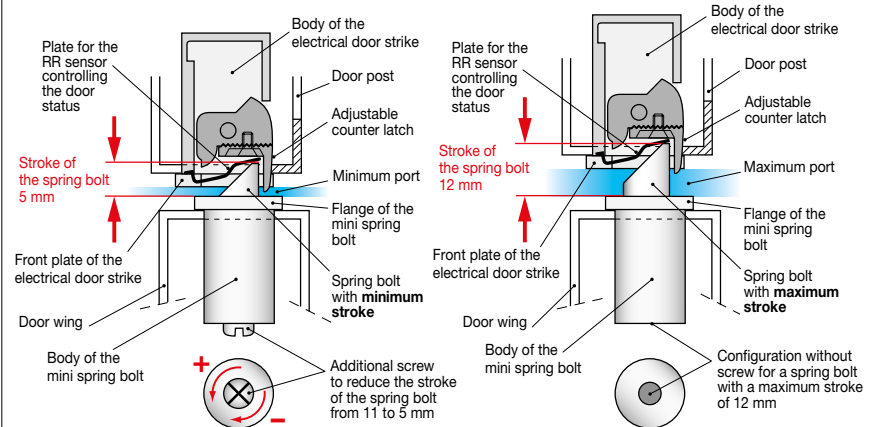
004910K

Note: on request, electrical **SLIM-DOORSTRIKE** can even be supplied with front plate in anodised machined aluminium, with customised shape, for alignment and mounting without visible cuts on custom profiles with rounded sections ("CLEAN" versions).

**Electrical SLIM-DOORSTRIKE with RR sensor to control the door status and adjustable counter latch**



**Adjustable mini spring bolt to quickly compensate the port**



PROFESSIONAL ELECTRICAL LOCKS